

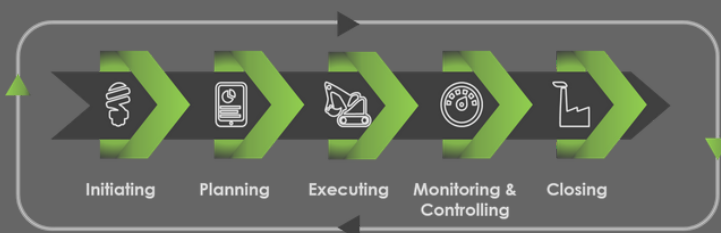
# STONEPro™



## PROJECT MANAGEMENT SERVICES

The development and integration of an improved business process or product, the installation of new equipment, the construction of a building or road, the rehabilitation of an extracted area - all are projects, and must be expertly managed to deliver on-time, on-budget results, learning and integration that organisations need.

Our project managers are available to assist your business from project initiation, planning, execution, monitoring and controlling, through to closing. Utilising our in-house developed STONEPro project management tool, our team will help to define, scope, analyse, contract, and track your project.



As contract Project Managers, EXTRAXI brings a wealth of industry and business experience, network, focused planning,

and structure to your project, ensuring you get exceptional value in all stages of the project life cycle.

**Phased Extraction Plan: 2015-2017**  
**Phase 1: July-August 2015**

**Phase 1: July - August 2015**  
Key Objectives:

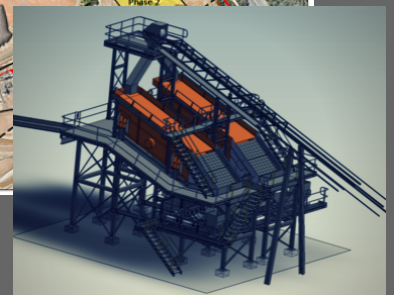
- Phase 1 Extraction from Cell 3/3
- Dewatering and Silt Stabilisation of existing Silt Treatment pond.

Phase 1 Dewatering and Silt Stabilisation. [See below]

Notes:

- 1) Commence preparation for extraction from Cell 3/4 (already partly stripped and extracted).
- 2) Continue extraction from Cell 3/3 to allow for use of this cell as a silt settling and storage area, once current silt settling and treatment is complete.
- 3) Estimated volumes remaining cell 3/3: 10,000 BCM including ramps & white sand

Approximate Cell Life: 1 month (contingent on bricks and extraction)



Our partners include design and drafting engineers, technical experts, construction contractors, and professional project managers. From site exploration to rehabilitation, from brownfield improvement projects to greenfield investments, we provide project management solutions.

Contact us for further information on how EXTRAXI and STONEPro can assist you in your next business project.

PO BOX 400  
MOUNT OMMANEY QLD 4074  
AUSTRALIA

[www.extraxiglobal.com](http://www.extraxiglobal.com)  
[enquiries@extraxiglobal.com.au](mailto:enquiries@extraxiglobal.com.au)  
Ph: +61 (0)481 103 933